



**GANDHI SCHOOL OF
ENGINEERING, BHABANDHA, BERHAMPUR**

TEACHING AND LEARNING MATERIAL

**SUBJECT:EMI
SEMESTER:3RD**

PREPARED BY:

ER.P.P MAHANTA &ER.BINAYAK DASH

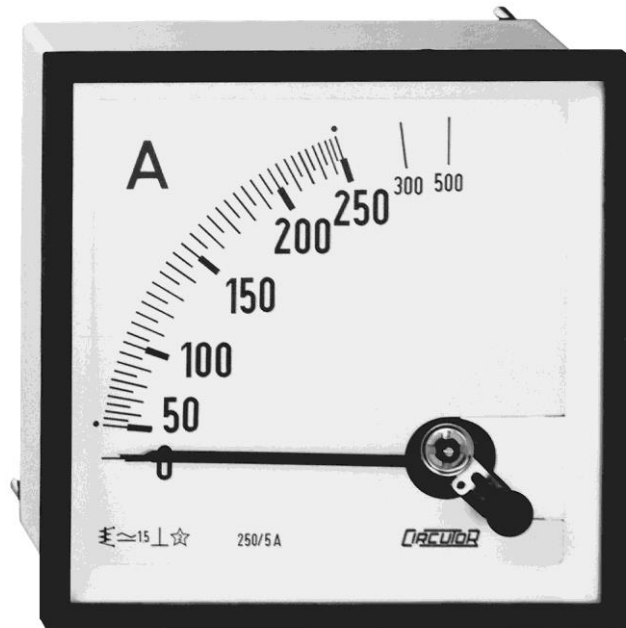
UNIT 2



DC ammeter



DC voltmeter



AC ammeter

UNIT 3



Digital Tachometer



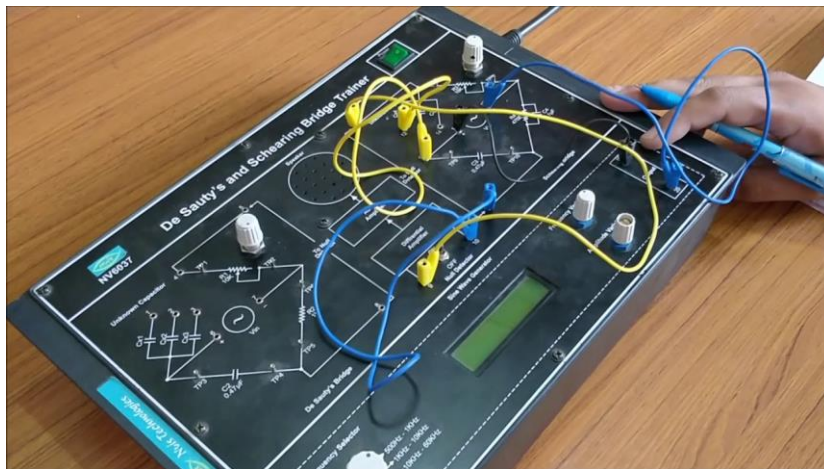
Digital multimeter

UNIT 4

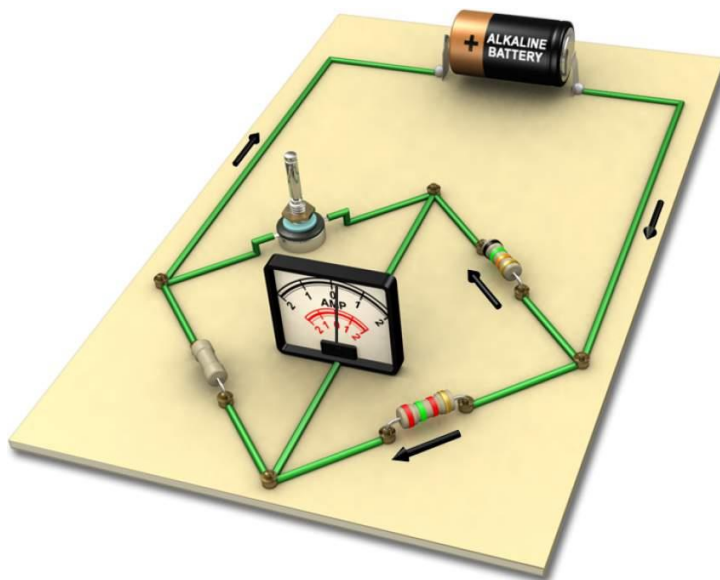


CRO

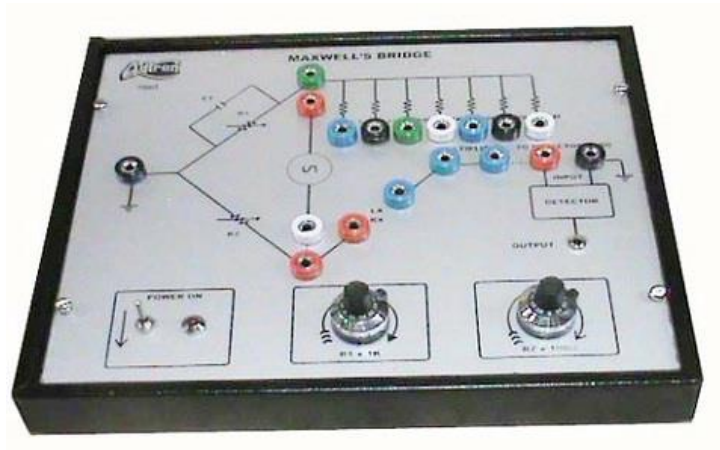
UNIT 5



schering bridge



Wheatstone bridge



Maxwell's bridge

UNIT 6



LVDT



Load cell



RTD



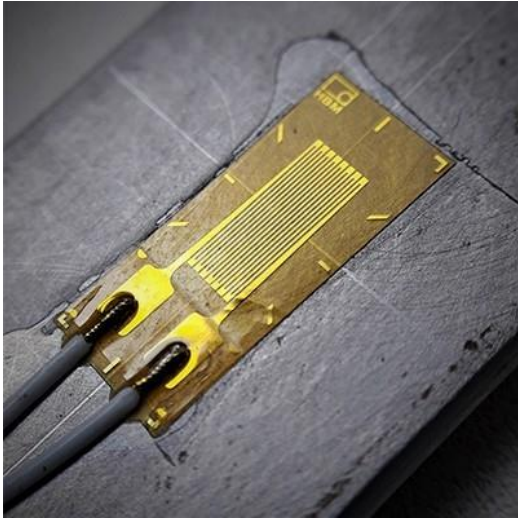
pyrometer



Thermister



Proximity Sensor



Strain Gauge