



**GANDHI SCHOOL OF  
ENGINEERING, BHABANDHA, BERHAMPUR**

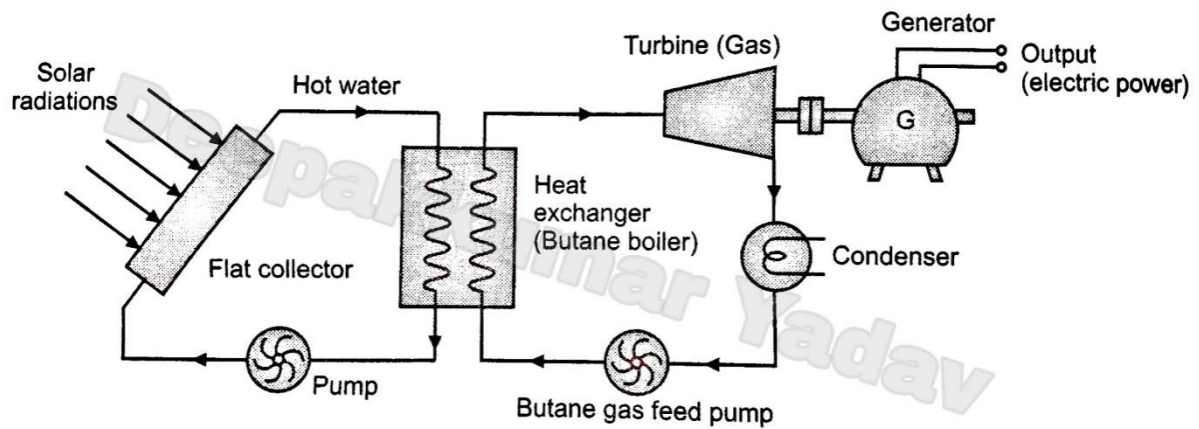
**SUBJECT: GENERATION TRANSMISSION  
& DISTRIBUTION**

**SEMESTER: 4TH**

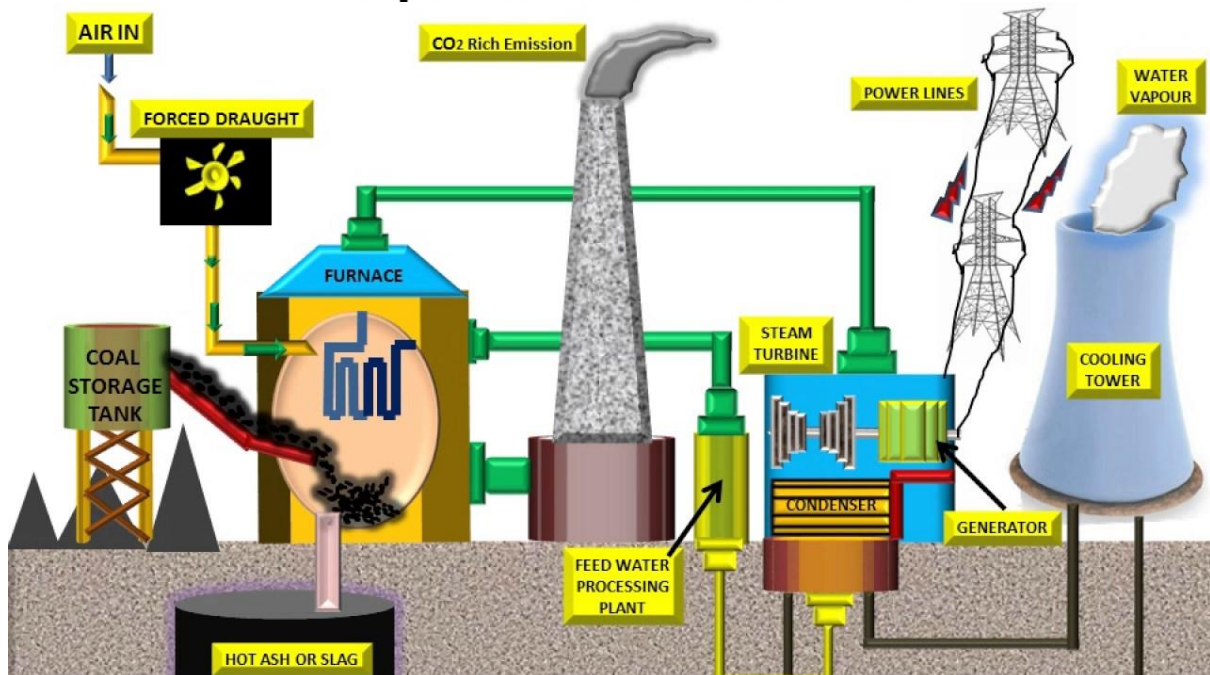
**PREPARED BY:-**

**ER. AMARESH CHOUDHURY & ER. S. MAHARANA**

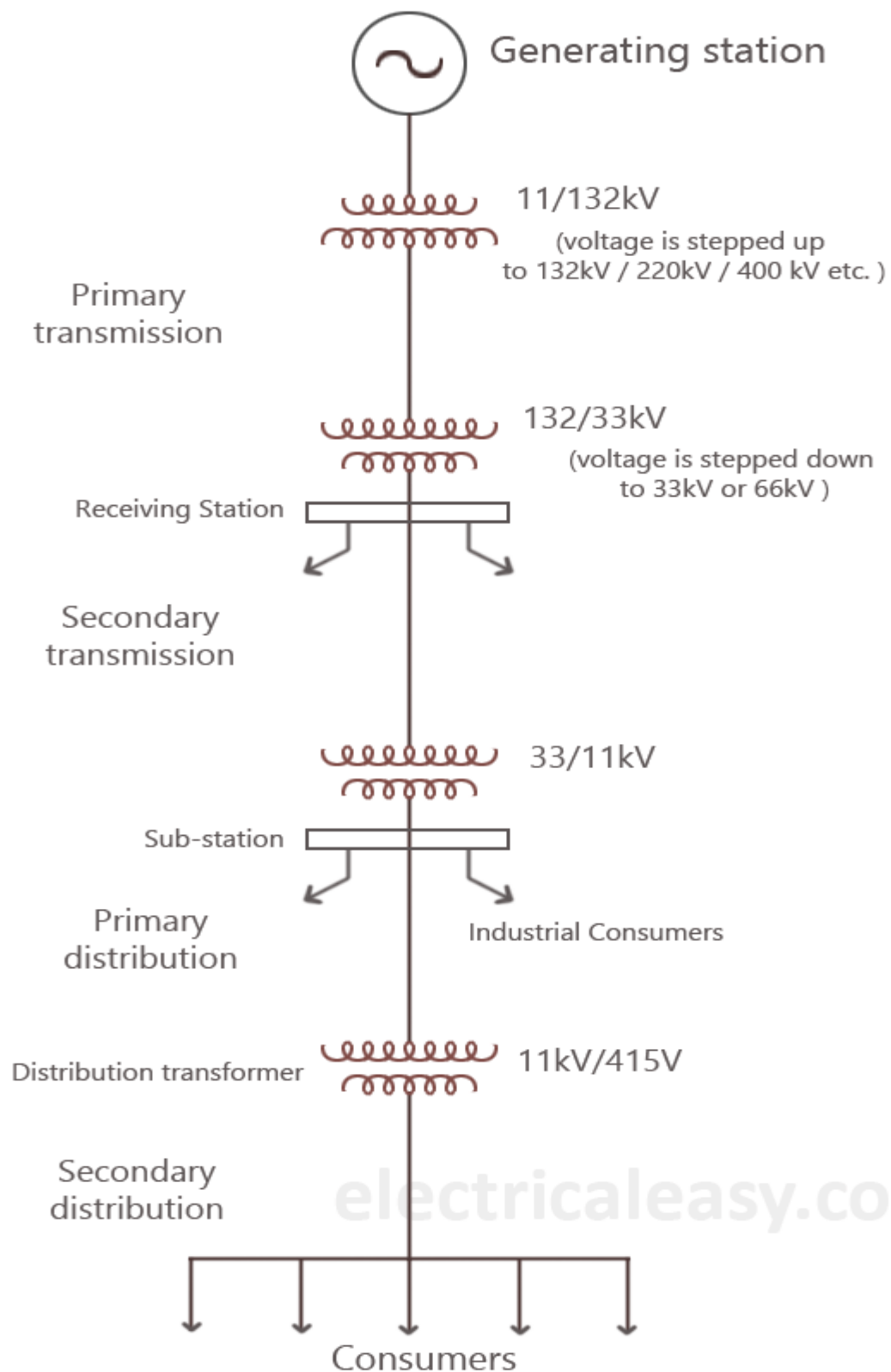
## 1<sup>ST</sup> CHAPTER-GENERATION OF ELECTRICITY



### Low Temperature Solar Power Plant



## 2<sup>ND</sup> CHAPTER-TRANSMISSION OF ELECTRIC POWER

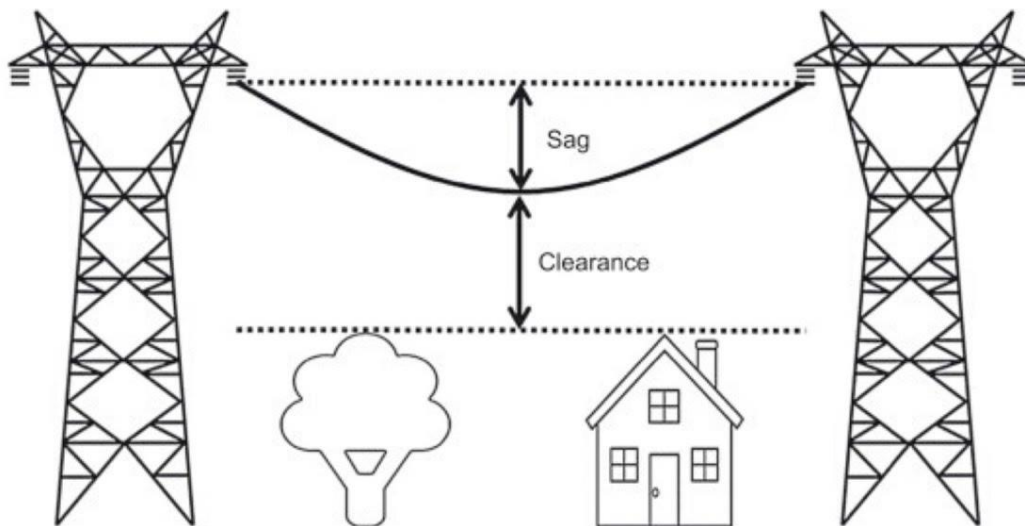


Corona discharge



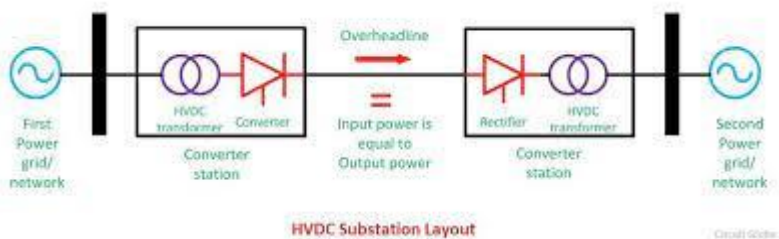
3<sup>RD</sup> CHAPTER-OVER HEAD LINES

## Sag in Overhead Transmission Line and

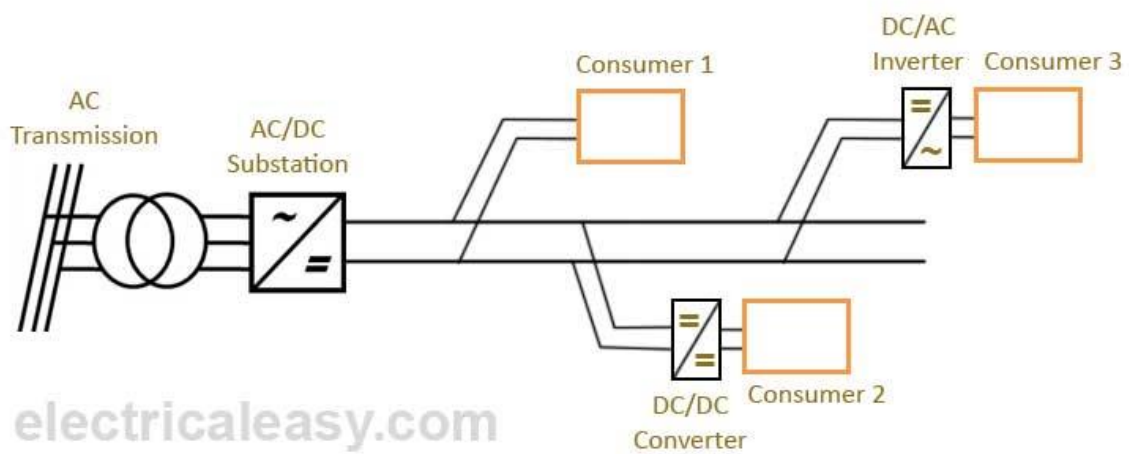


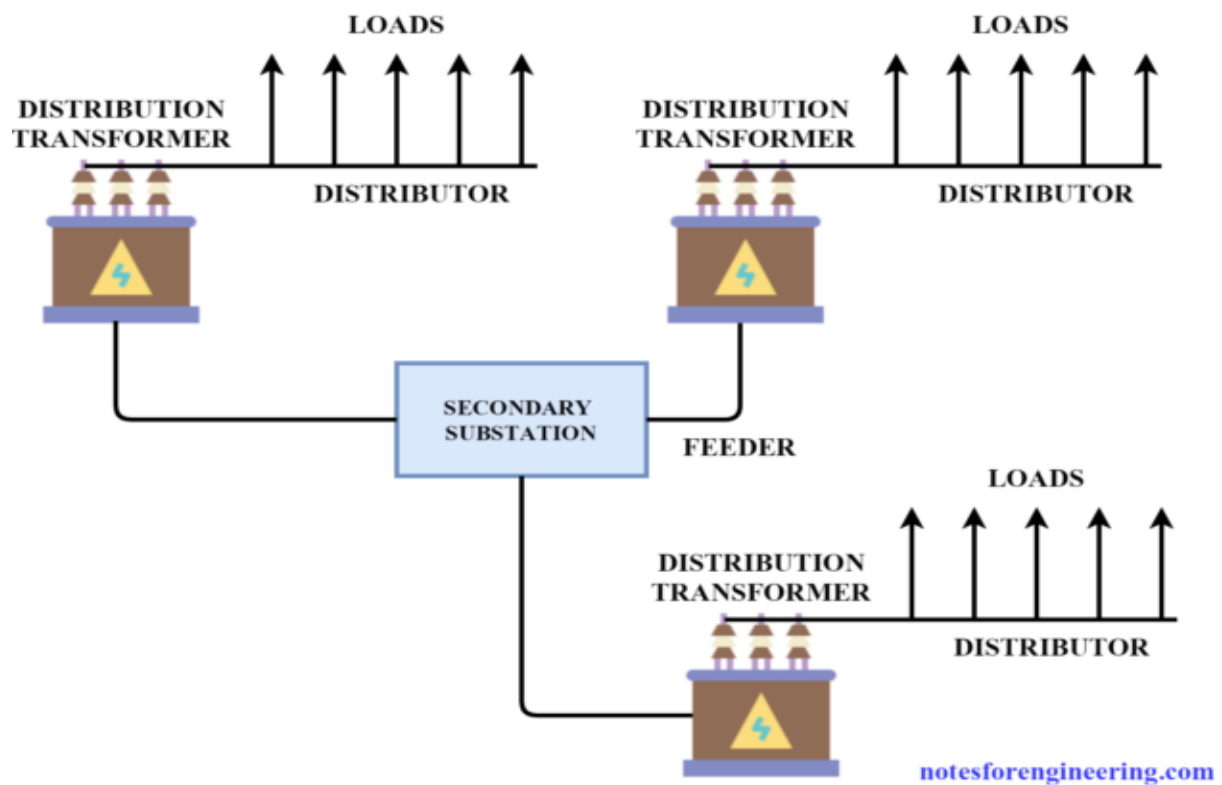


## 5<sup>TH</sup> CHAPTER-EHV TRANSMISSION

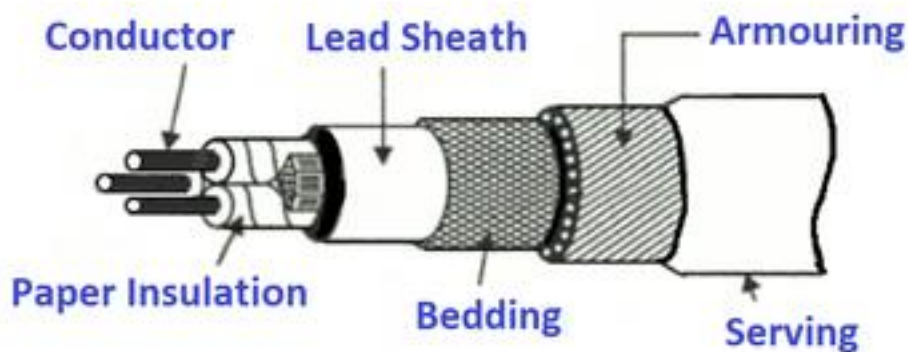


## 6<sup>TH</sup> CHAPTER-DISTRIBUTION SYSTEMS

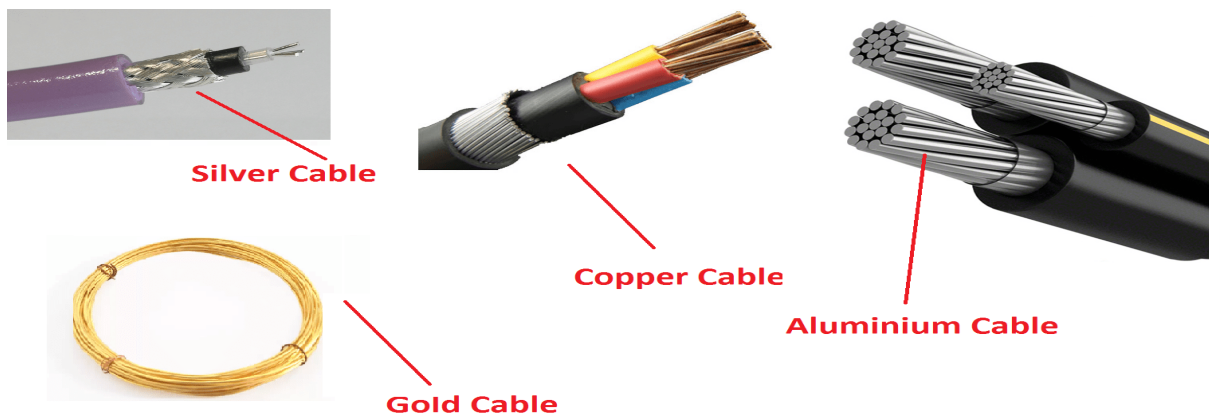




## 7<sup>TH</sup> CHAPTER-UNDERGROUND CABLES

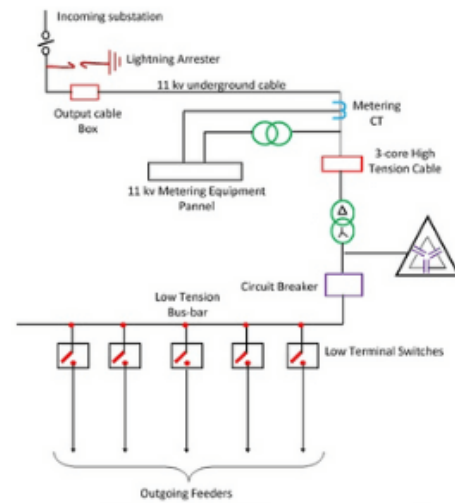
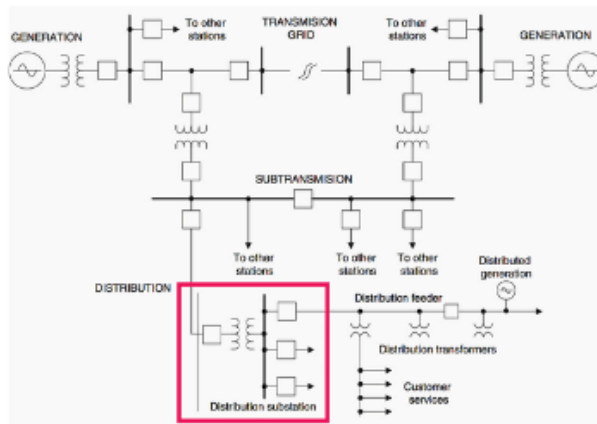


### Construction of a Power Cable



## 10<sup>TH</sup> CHAPTER-SUBSTATION

# What is an Electrical Power Substation?



**Electrical 4 U**