



GANDHI SCHOOL OF
ENGINEERING, BHABANDHA, BERHAMPUR

TEACHING AND LEARNING MATERIAL

**WAVE PROPAGATION AND BROADBAND
COMMUNICATION
SEMESTER: 5TH**

ER.SANTOSH KUMAR SAHU

LESSON 1-WAVE PROPAGATION AND ANTENNA



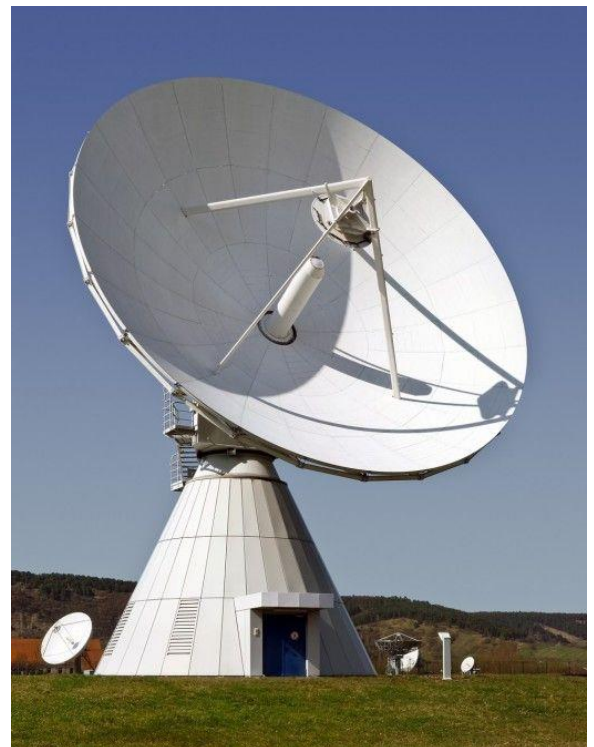
YAGI UDA ANTENNA



RHOMBIC ANTENNA

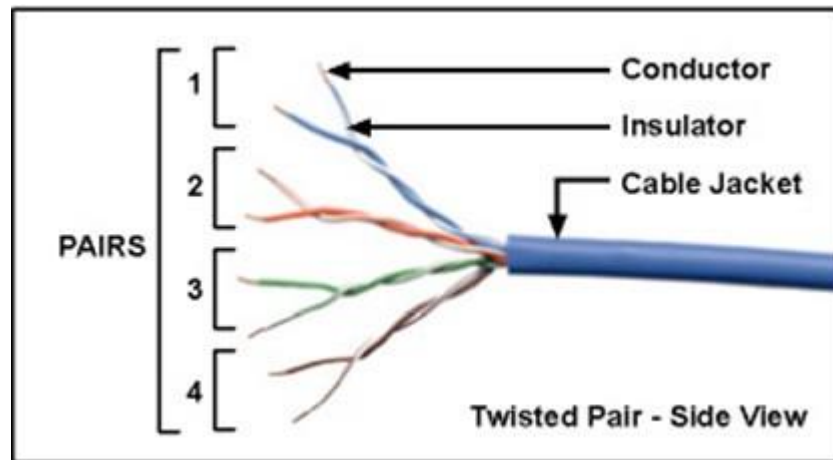


HORN ANTENNA

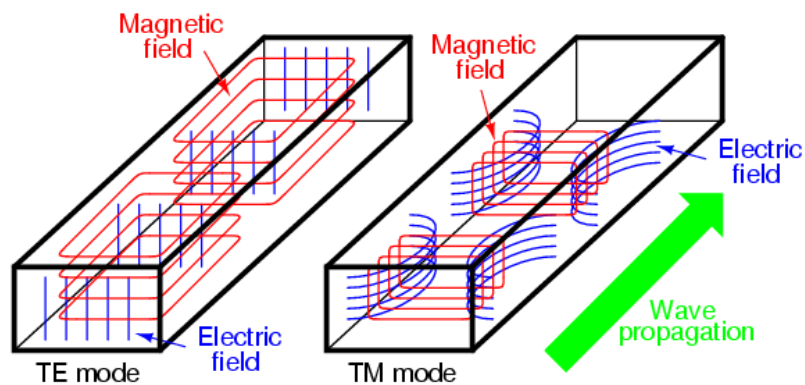
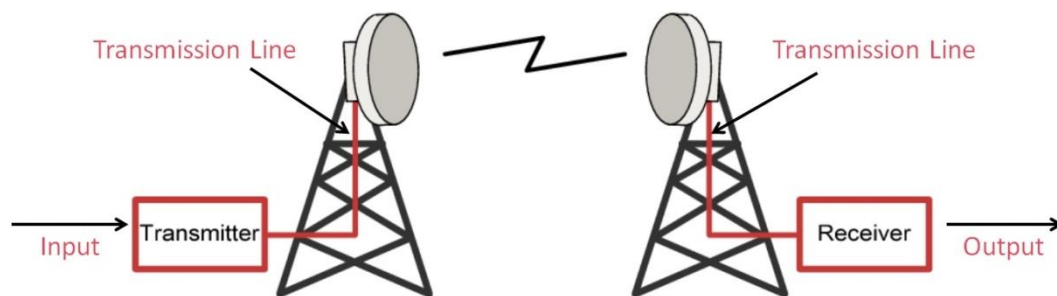


DISH ANTENNA

LESSON 2-TRANSMISSION LINE

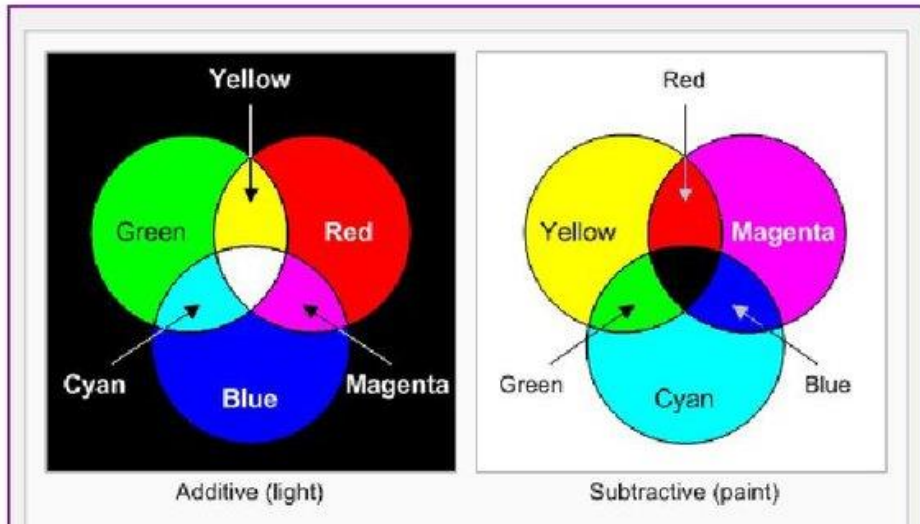


TWISTED PAIR CABLE



Magnetic flux lines appear as continuous loops
Electric flux lines appear with beginning and end points

LESSON 3- TELEVISION ENGINEERING



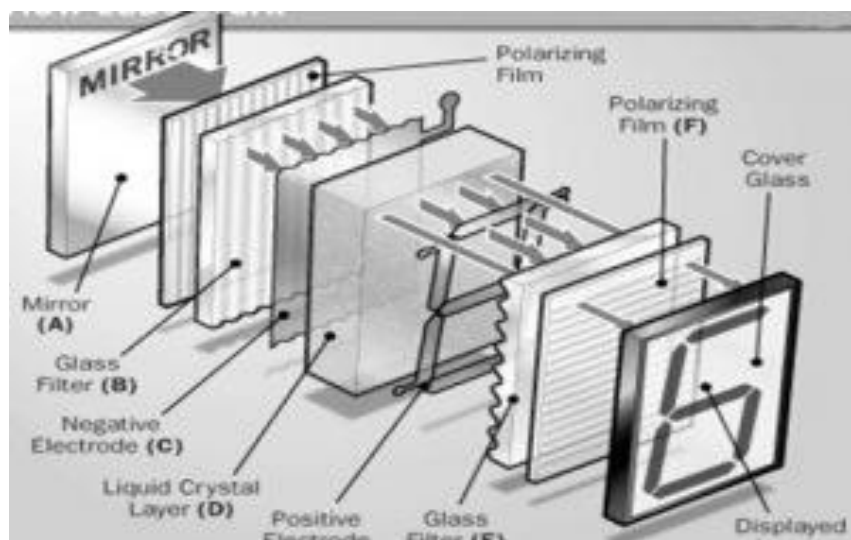
COLOUR SIGNAL



TV TRANSMITTING ANTENNA

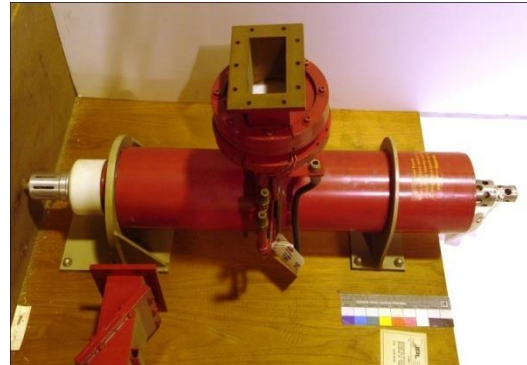
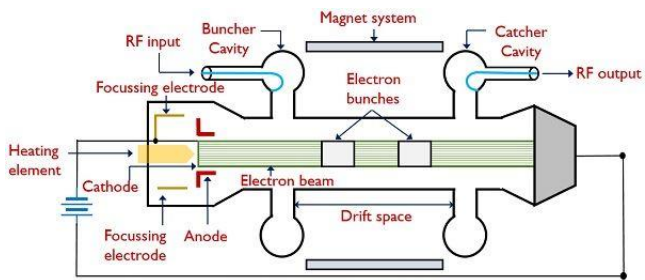


CATHODE RAY TUBE TV

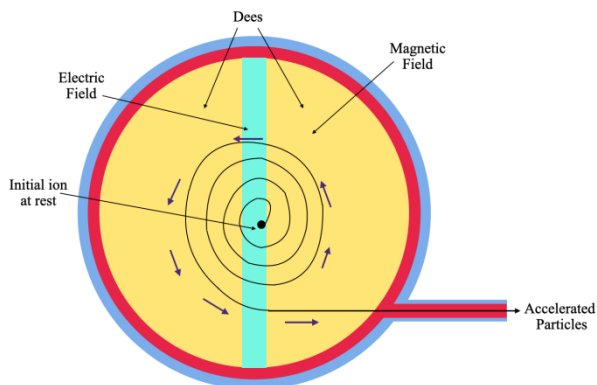


LIQUID CRYSTAL DISPLAY

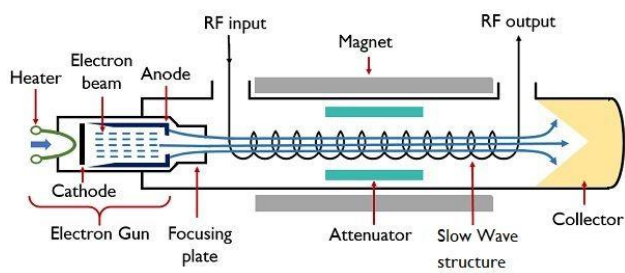
LESSON 4-MICROWAVE ENGINEERING



TWO CAVITY KLYSTRON



CYCLOTRON



TRAVELLING WAVETUBE

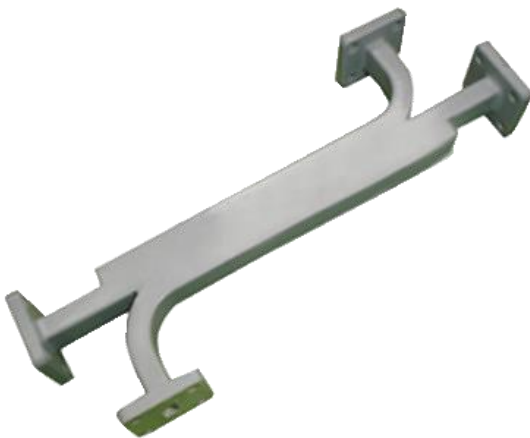




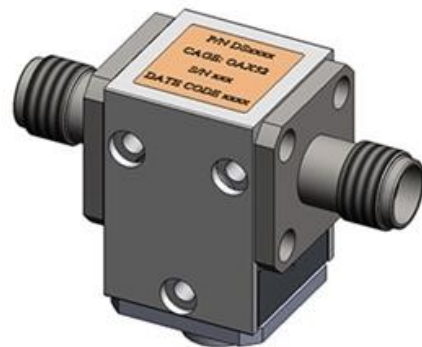
RECTANGULAR WAVEGUIDE



CIRCULAR WAVEGUIDE



DIRECTIONAL COUPLER



MICROWAVE ISOLATOR